

FALL NEWSLETTER 2017

www.oldfig.org



FIG · GARDEN
HOME · OWNERS
ASSOCIATION

NEWSLETTER

P.O. Box 5796 , Fresno, California 93755 · www.oldfig.org · September 2017

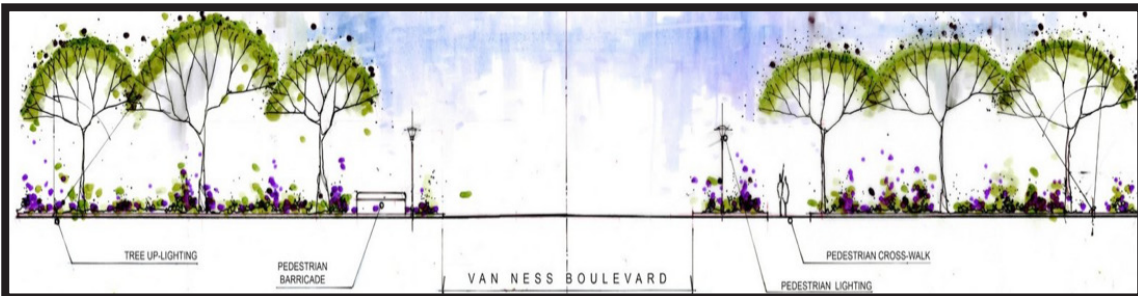
Annual Fig Garden Dinner
 Sunday, October 1st 5:30pm, dinner served at 6:00pm
Fig Garden Swim and Racquet Club
 4722 N. Maroa Ave.
 RSVP with check by September 22nd

PRESIDENT'S MESSAGE
 By Dan Gallagher

This is the Fig Garden Home Owners Association's 70th year of incorporation. Over those many years, The FGHOA has worked to promote and protect the unique and special lifestyle that those of us who live here enjoy. Since J.C. Forkner began development nearly 100 years ago, the City of Fresno has grown and surrounded Old Fig, but our neighborhood has withstood most of the pressures of urban envelopment and the issues that go with it.

One of the ways Fresno's growth has affected our neighborhood has been an increase in traffic. The FGHOA has worked, in conjunction with the County of Fresno, to try to mitigate the effects of the increasing number of cars. The volume of cars on Ashlan Avenue, their speed, noise, and pollution have been a safety issue that we've worked on for decades. This increase in traffic also has the potential to cut our neighborhood into two separate halves. As many of you who attended our meetings regarding Ashlan know, we now have an exciting solution that promises to make Ashlan safer and easier for walkers to cross.

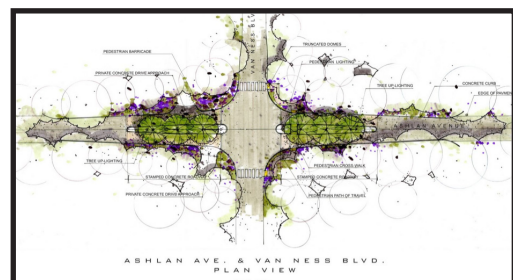
Fresno County Supervisor Andreas Borgeas has been instrumental in aiding the Fig Garden Home Owners Association's effort to construct a traffic calming project at the intersection of Van Ness Blvd and Ashlan Ave. We're happy to report that construction on the project will begin in the spring of 2018. When completed, it will give pedestrians a safe way to cross. The project involves placing two islands in the center of Ashlan which will allow people to cross one lane of traffic at a time, and serve to slow cars that are traveling East and West.



The county will bear the hefty cost for building this and will pay for the island construction. The Fig Garden Home Owners Association will pay for the cost of landscaping and engineering. Last winter, the Home Owners Association engaged a local engineering firm to design this project with the hope that in doing so we would speed up its implementation. We've paid for this from our savings which we have built up over years with just such a project in mind. What remains for us to pay for are the "extras" we'd like to see and those that the county does not pay for. This basically means we'll pay for the planting of trees in the two islands.

To pay for engineering, we have spent a fair amount of the savings that we've built up over the last few years. We would like to ask neighbors for donations to help replenish our savings. This is a voluntary donation, as is joining the Association, but we ask that you strongly consider helping us by mailing a donation to PO Box 5796, Fresno CA 93755. It's important for us to replenish our savings for any future emergency the neighborhood may encounter, so please make an effort to help out. Make checks out to: Fig Garden Home Owners Association.

Reducing traffic on Ashlan is extremely important to Old Fig. We are one of the largest homeowners associations in the country, and without reducing and slowing the traffic that crosses our homes, our neighborhood will essentially be cut in half. I can't stress enough the importance of keeping us whole. Allowing Ashlan to become a major cross-town arterial would create two different neighborhoods and that, in turn, would lead to a degradation of our homes. The planned islands on Ashlan will keep our neighborhood whole, make it safer, and be beautiful when the landscaping becomes mature, so please help by donating.



ANNUAL DINNER

SUNDAY, OCTOBER 1ST
5:30 - 8:30PM

FIG GARDEN SWIM & RACQUET CLUB
4722 N. MAROA AVE.

Wine will be served during ceremony

WE ENCOURAGE YOU TO INVITE YOUR FRIENDS AND NEIGHBORS TO THIS DINNER. IT'S A WONDERFUL OPPORTUNITY FOR PEOPLE TO COME TOGETHER AND CELEBRATE **OLD FIG**

CATERING BY:

DEBBIE & HER AMAZING STAFF AT THE CLUB

GUEST OF HONOR:

FIG THE HORSE

The calming project on Ashlan Ave will be discussed. As in the past, we have invited Fresno County officials and law enforcement serving our area to attend the dinner and answer your questions.

\$40 per person

RSVP (by sending a check) by Friday, Sept 22nd

Questions? Contact Valerie @ 559.779.8691

Casual Attire | Child care not provided

A HORSE NAMED FIG

By Lieutenant Kathy Curtice

Fig was born in 1995 and was raised and trained to be a harness racing horse. After pulling a sulky on California race tracks he was retired from racing and relocated to a farm east of Fresno. Shortly after his arrival in Fresno he was purchased by the Fresno County Sheriff's Office with funds provided by the Fig Garden Home Owners Association. The Association donated \$5,000 to cover the cost of the horse and a new saddle custom-built for him. In recognition of that donation the new horse was named "Fig."

Fig was purchased by the Sheriff's Office in the spring of 1999, and it was with the Sheriff's Office that he received his first training with a rider on his back. After three months of training Fig completed a 40-hour certification course and was deployed to the Patrol Bureau as a part of the Sheriff's Mounted Patrol Unit. Fig went on to complete Advanced Mounted Patrol courses and was quite successful in his career. Fig worked full time for the Mounted Patrol Unit until budget constraints in 2010 forced the shutdown of the unit. When the unit shut down, the county allowed prior Mounted Unit riders to purchase the patrol horses. At that time Lieutenant Kathy Curtice purchased Fig and placed him into semi-retirement. The Mounted Patrol Unit was missed so much by the public that it was reinstated only eight short months after it was shut down. Fig (now age 22) deploys with the unit on an occasional as-needed basis. These days he often can be found carrying the American flag during special events when the Mounted Unit presents the flags.

During his career Fig has worked numerous crowd control events, public relations events, and has patrolled nearly every corner of Fresno County. He has been on scene at shootings, searched for suspects and conducted vehicle stops. Fig has deployed in an official capacity throughout the state of California at a variety of events. After entering his semi-retirement, Fig competed in Trail Trial competitions throughout the state of California and was a California state Reserve Champion in 2015. Fig spent two nights in a horse hospital during 2015, and his personality and history were so interesting that a vet tech treating him wrote a college paper about his life.



Fig was first trained to ride by Sheriff's Deputy Kathy Dooley. Deputy Dooley was assigned to Fig as her primary horse while assigned full time to the Mounted Patrol Unit. Deputy Dooley was later promoted and got married, becoming Sergeant Kathy Curtice. After another promotion Lieutenant Kathy Curtice still remains the same original person who first rode Fig and trained him for the Mounted Patrol Unit in 1999. Fig will remain with Lieutenant Curtice for the remainder of his life.

Nota Bene: Fig accepted our invitation to the Annual Dinner



Lt. Kathy Curtice and Fig.

FIG GARDEN ELECTRONIC NEIGHBORHOOD WATCH

If you would like to receive email notifications about crime events in this area, send your email address to FigGardenWatch@gmail.com to be included in the mailings in order to receive: time sensitive neighborhood crime alerts and monthly crime statistics compiled by the deputies on duty through the Fig Garden Police Protection District.

STATION 20 UPDATE

By Fire Chief Kerri L. Donis

The remodel is underway at Fire Station 20, which started on July 24, 2017. The construction crews are working diligently on Phase 1, which includes the Conference Room/Fire Investigators building. They are currently working on walls, plumbing, electrical, windows and concrete work.



Phase 2, scheduled to begin on Aug 28, includes the remodel of the Firehouse building, to include the Captain's dorm, office, kitchen, and exercise room. Firefighter responses to emergencies will not be impacted during the remodel.



CHRISTMAS TREE LANE

Christmas Tree Lane will be celebrating its 95th season this year. Our opening night will be Saturday, December 2nd. The Lane will be open through Christmas Day, December 25th. Our 2017 walk nights are Saturday, December 2nd and Tuesday, December 12th. Let's mark our calendars and enjoy another magical year.



THANK YOU FOR SPONSORING OLD FIG!

Please join the Fig Garden Home Owners Association. We work to protect and strengthen our unique neighborhood. The dues are \$60/year. Please mail your check payable to:

FGHOA
PO BOX 5796
Fresno CA 93755
or pay on our website: www.oldfig.org

Unlike most homeowners groups, our dues are voluntary and we depend on the generosity of our fellow neighbors. Dues money goes to pay fees associated with filing documents that protect the quality of life and integrity of the neighborhood, printing and mailing newsletters to keep you informed, and running the www.oldfig.org web site.

FIG GARDEN HOME OWNERS ASSOCIATION OFFICERS & DIRECTORS FOR 2017

President
 Vice-President
 Treasurer
 Secretary

Dan Gallagher
 Tony Pings
 Valerie Lemay
 Merilee Amos

dan.gallagher@fresnounified.org
Anthony@pings.com
vlemay@hotmail.com
merilee.fghoa@gmail.com

BOARD OF DIRECTORS

Dean Alexander
 Jack Jensen
 Magda Gilewicz
 Angie Hyatt
 Prudence Zalewski

dalex215@gmail.com
roy_jensen@comcast.net
mgilewicz@gmail.com
angie@hyattre.com
pru@softsyn.net

USEFUL CONTACT INFORMATION

District 2 Supervisor's Office:	600-2000
Sheriff's Dispatch:	600-3111 (for emergencies call 911)
Fresno Humane Animal Services:	600-7387 (PETS)
Fresno County Code Enforcement:	600-4550
24-Hour Domestic Violence Help:	233-4357 (HELP)
Building Permit Info:	600-4540
City of Fresno Water Division:	621-5300, 621-5480
Fig Garden Fire Station (non-emergency):	621-4320 (for emergencies call 911)
Fresno County Library Information:	600-7323 (READ)
Fresno County Public Health:	600-3200, 600-6449
Graffiti Abatement:	600-8107
Fresno County Road Maintenance:	600-4840